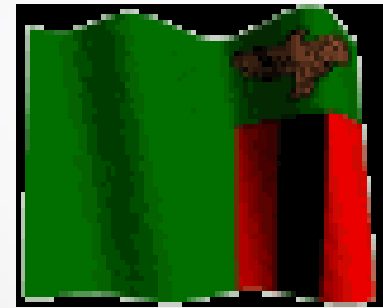


CBPP in Zambia



Field and Laboratory Activities

26th July, 2022

Benson Bowa



Presentation Outline

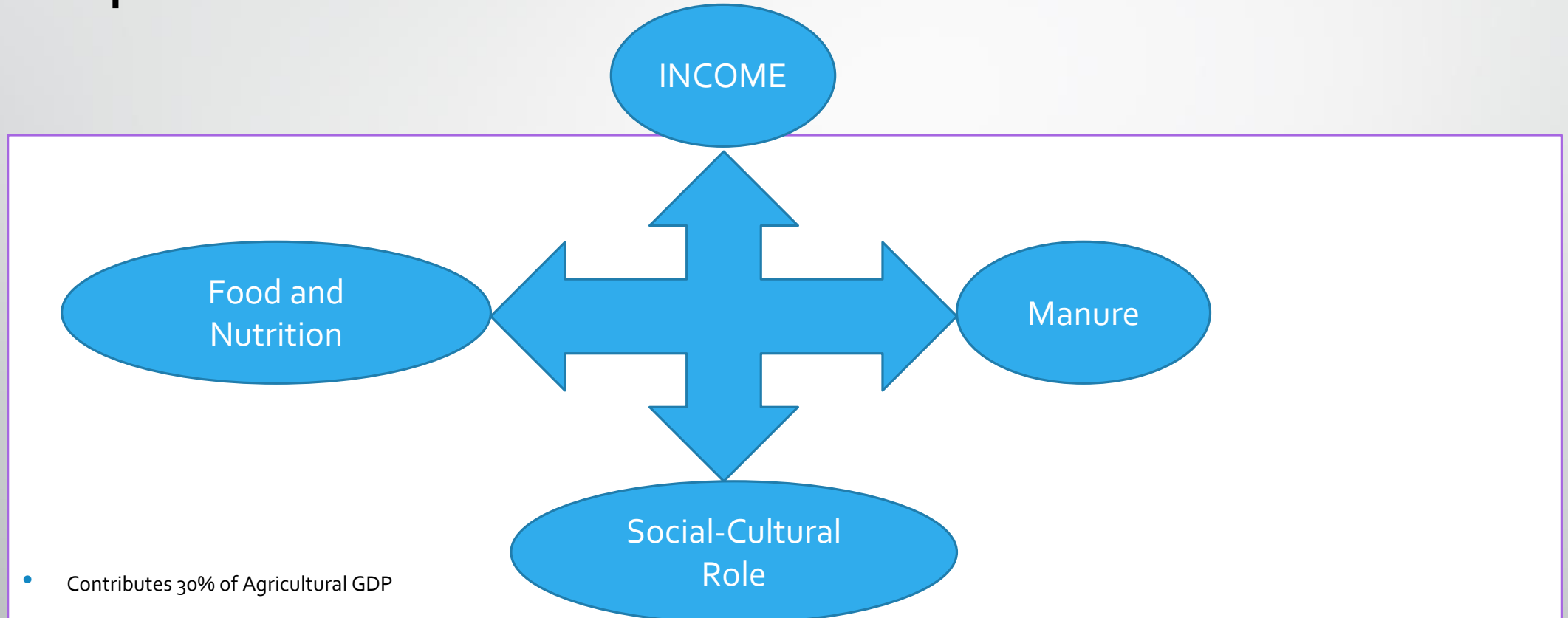
- Introduction
- Importance of cattle
- History of CBPP
- Recent outbreaks
- Field Activities
- Laboratory Activities
- Control Strategy

Introduction

- Land Size: 752,614 km²
- Population: 18.38 million
- Administration: 10 Provinces
- Capital City: Lusaka
- Neighbor countries: 8
- Cattle Population: 3.7 million

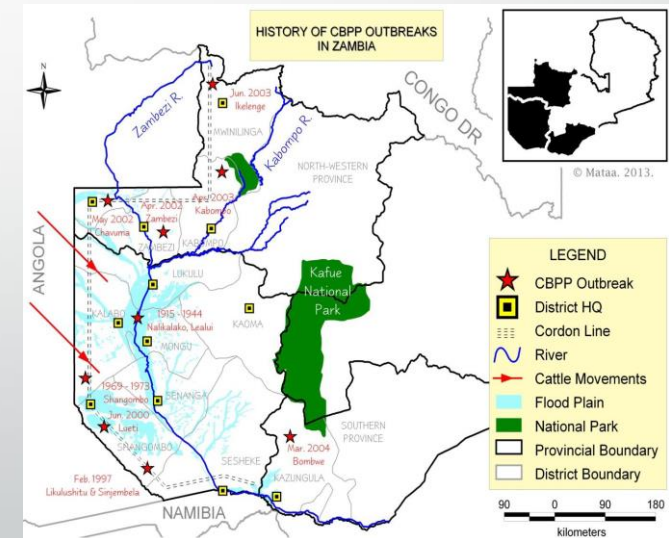


Importance of Cattle

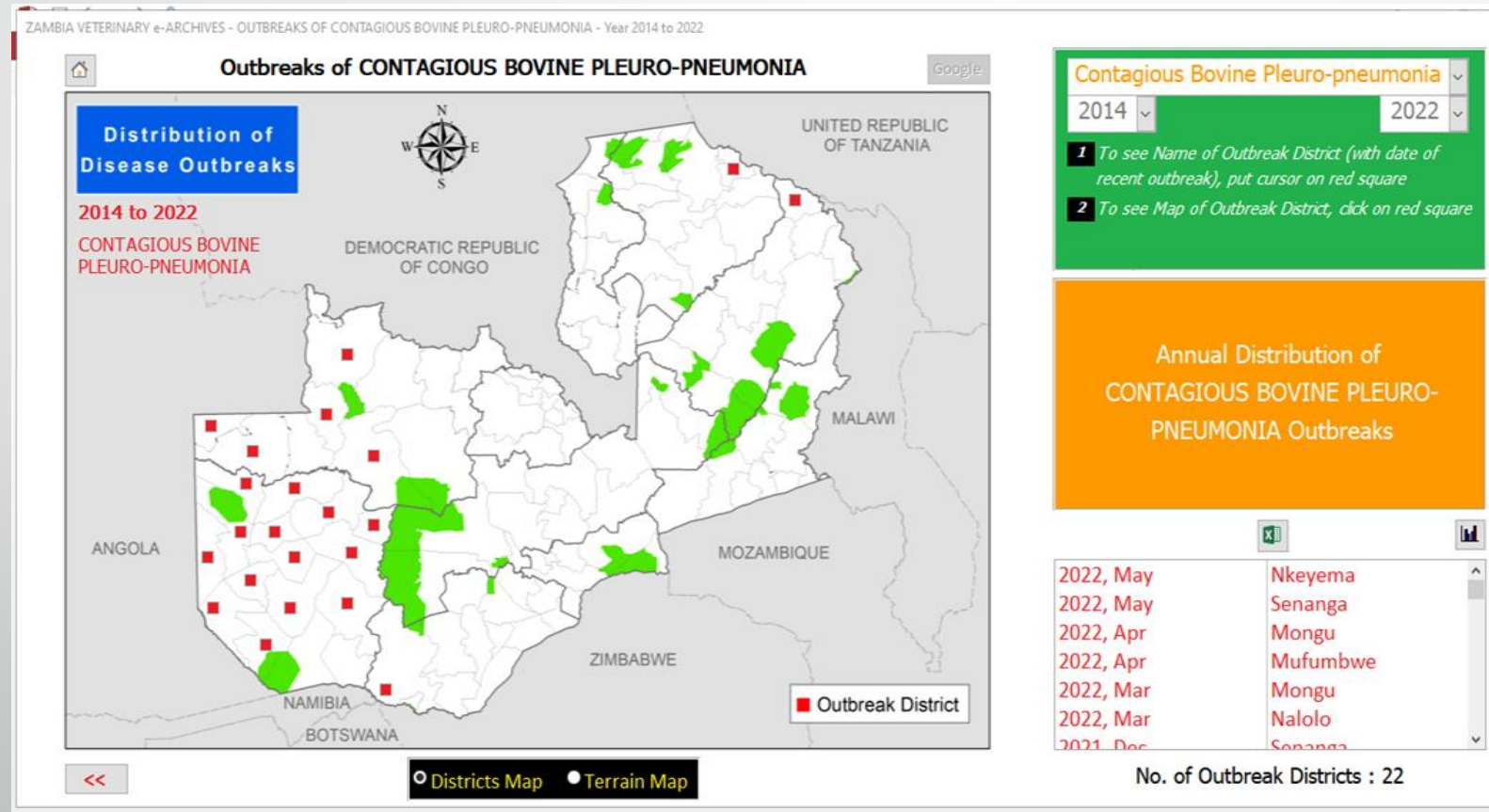


History of CBPP in Zambia

- 1914 introduced in western province, 1947 eradicated
- 1969 reintroduced, 1972 eradicated
- 1997 reintroduced
- 2002 spread to N/W province
- Also reported in Mbala and Nakonde
- 2004 report in Kazungula district



Recent Outbreaks of CBPP



Field Activities

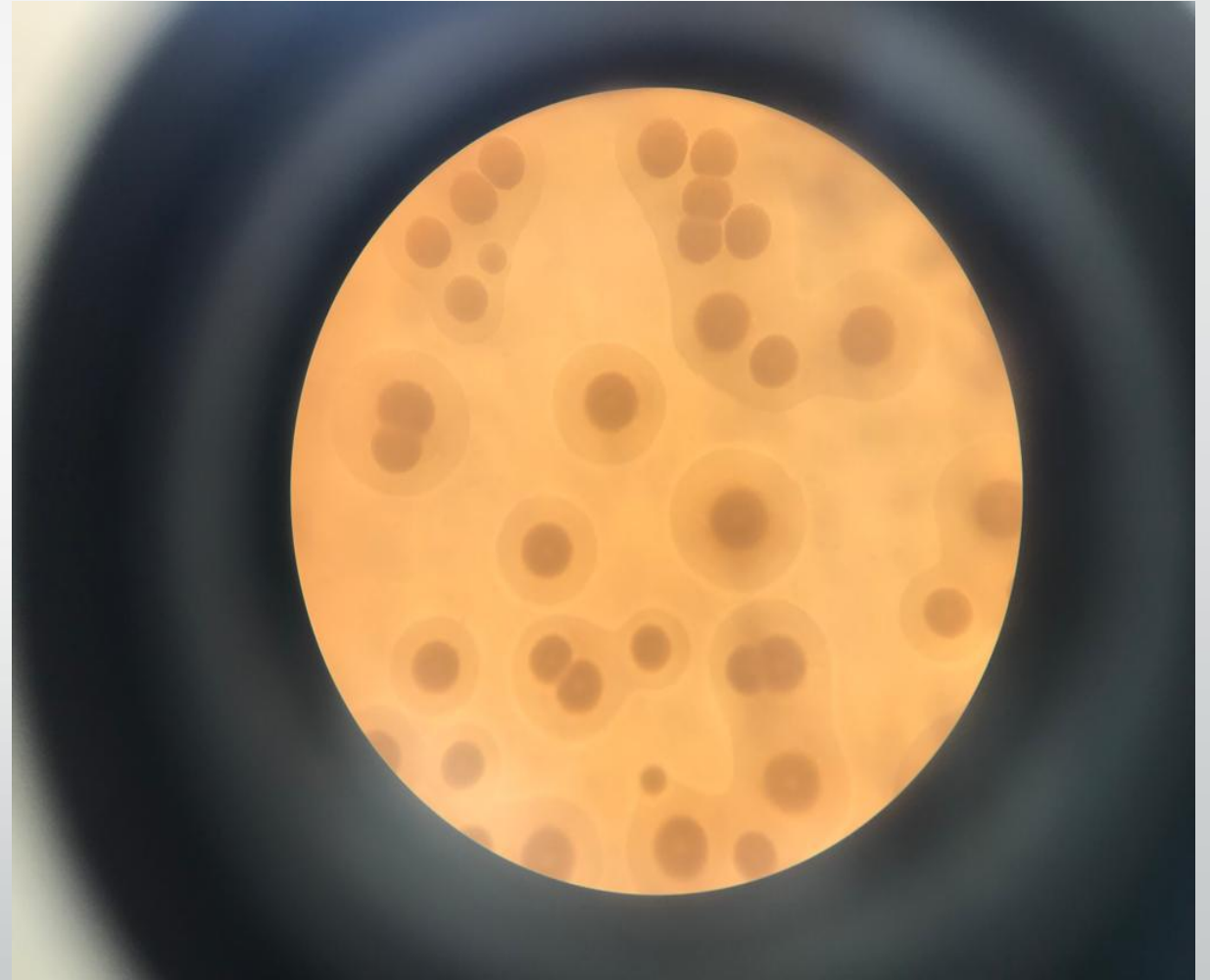
- Clinical and Postmortem Dx
- Abattoir and Sero surveillance
- Movement restrictions
- Cattle branding
- Test and Slaughter
- Vaccinations
- Awareness campaigns
- CBPP task forces



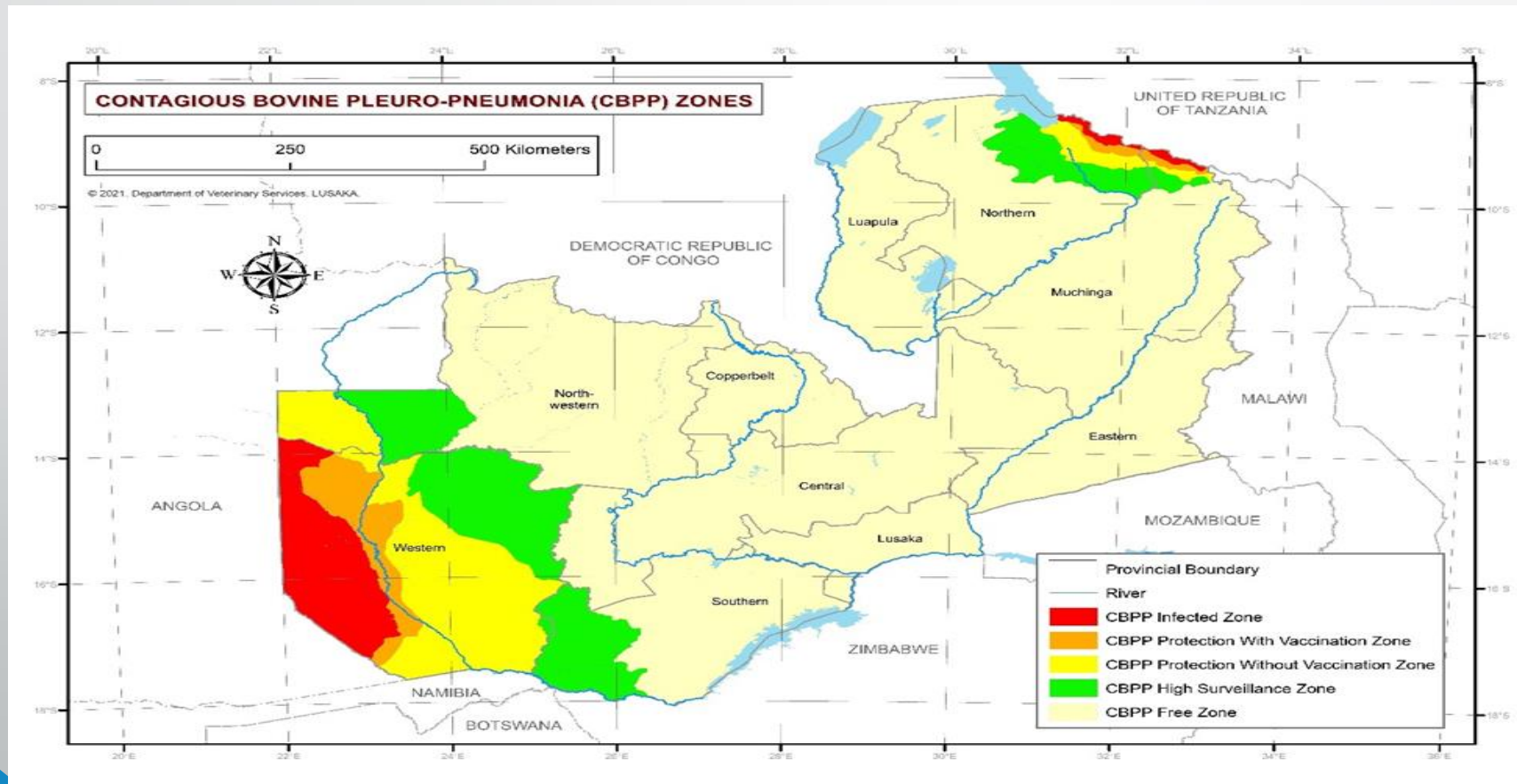
Laboratory Activities

- **Tools**

- Serology
- Culture
- Molecular diagnosis
- Antigen production



CBPP Control Strategy



Thank you

